

IMPACT HAPPENS HERE



APPLIED
RESEARCH



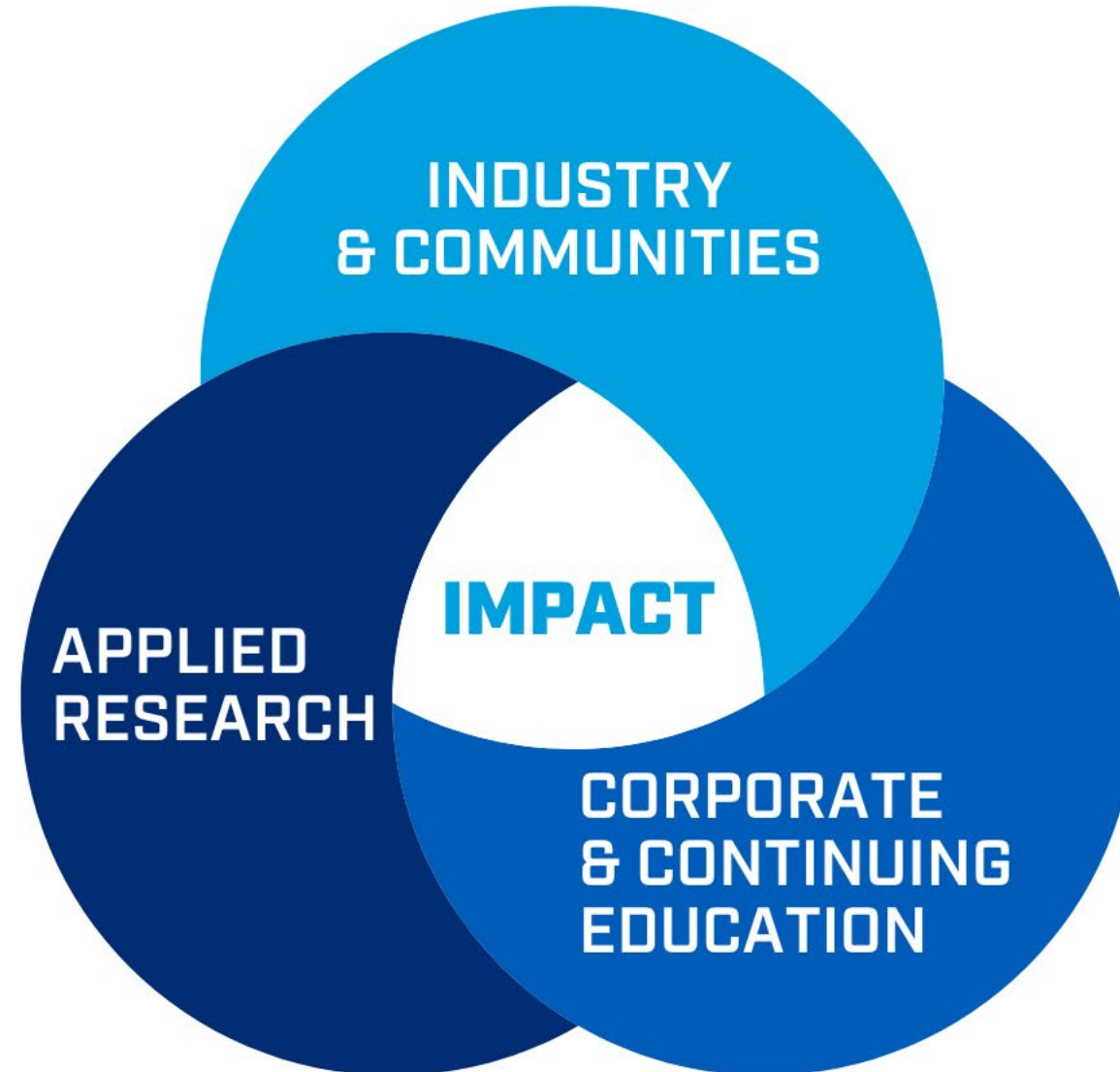
CORPORATE &
CONTINUING
EDUCATION

OLLE LAGERQUIST, ASSOCIATE VP, NAIT INDUSTRY SOLUTIONS

CARMELITA CRISP, MANAGER, NAIT INDIGENOUS PARTNERSHIPS & ENGAGEMENT

CAROL WILDCAT, DIRECTOR, ERMINESKIN CREE NATION INDUSTRIAL RELATIONS DEPARTMENT

OUR MODEL IS OUR STRENGTH



OUR MODEL IS OUR STRENGTH

SUSTAINABILITY FOCUSED

Our Applied Research portfolio is heavily focused to developing sustainable technologies and processes to create a positive impact for the environment.

UPSKILLING & CAPACITY BUILDING

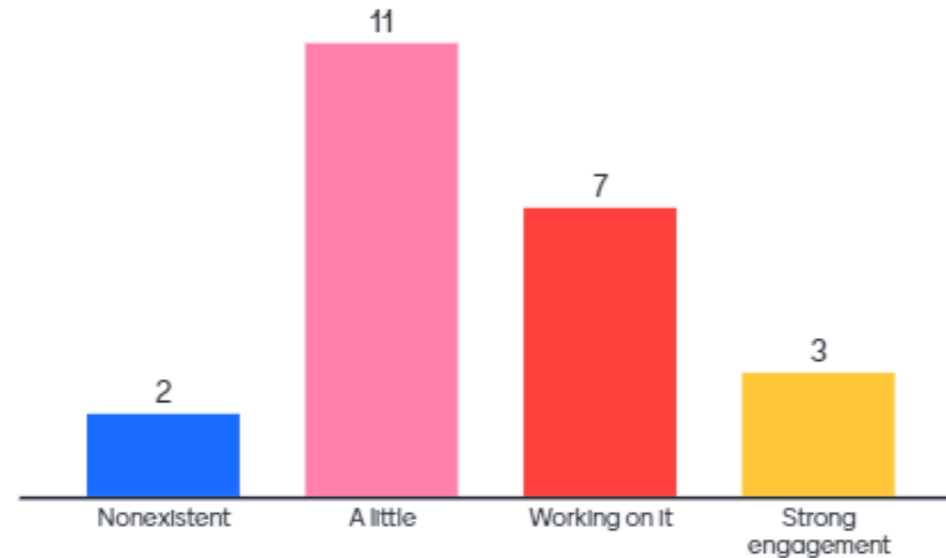
Our Corporate & Continuing Education portfolio helps students and community members build the skills and capacity to improve their lives and the lives of their family members.

CREATING IMPACT

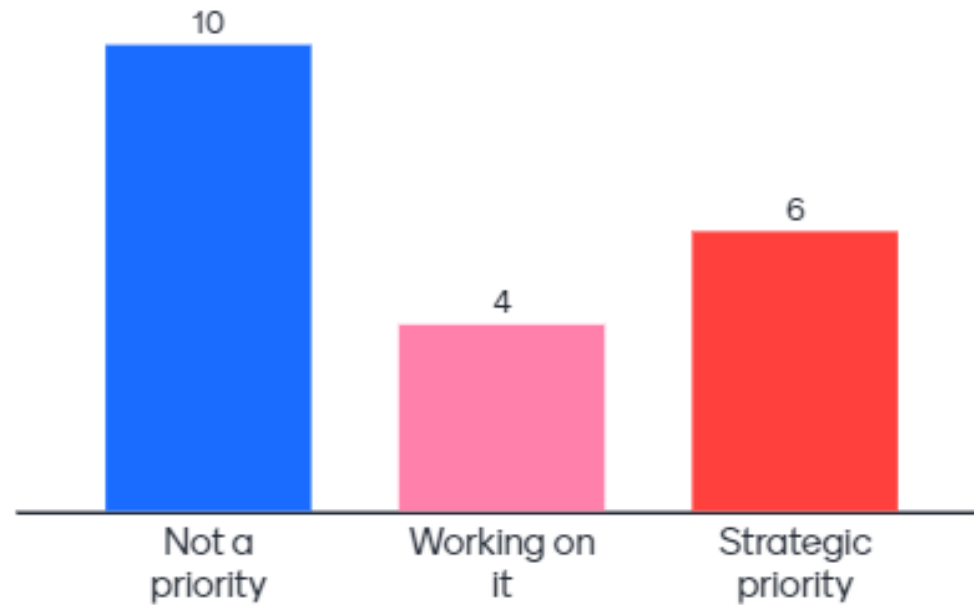
We are highly productive and expanding quickly because we are committed to creating an impact for the environment, for communities, and for the economy.



Indicate the level of engagement between your institution's Applied Research Department and Corporate/ Continuing Education (or equivalent)



How intentional is your organization about aligning Applied Research and Corporate/ConEd?



INDIGENOUS PARTNERSHIPS AND ENGAGEMENT



WE WALK BESIDE YOU

Through NAIT Applied Research and Corporate & Continuing Education, our Indigenous community partners lead the way on their research initiatives in technology development, environmental testing, and training that will enable growth and economic development which aligns with the goals and dreams of our partners.



OUR GUIDING PRINCIPLES

CREATING RELATIONSHIPS

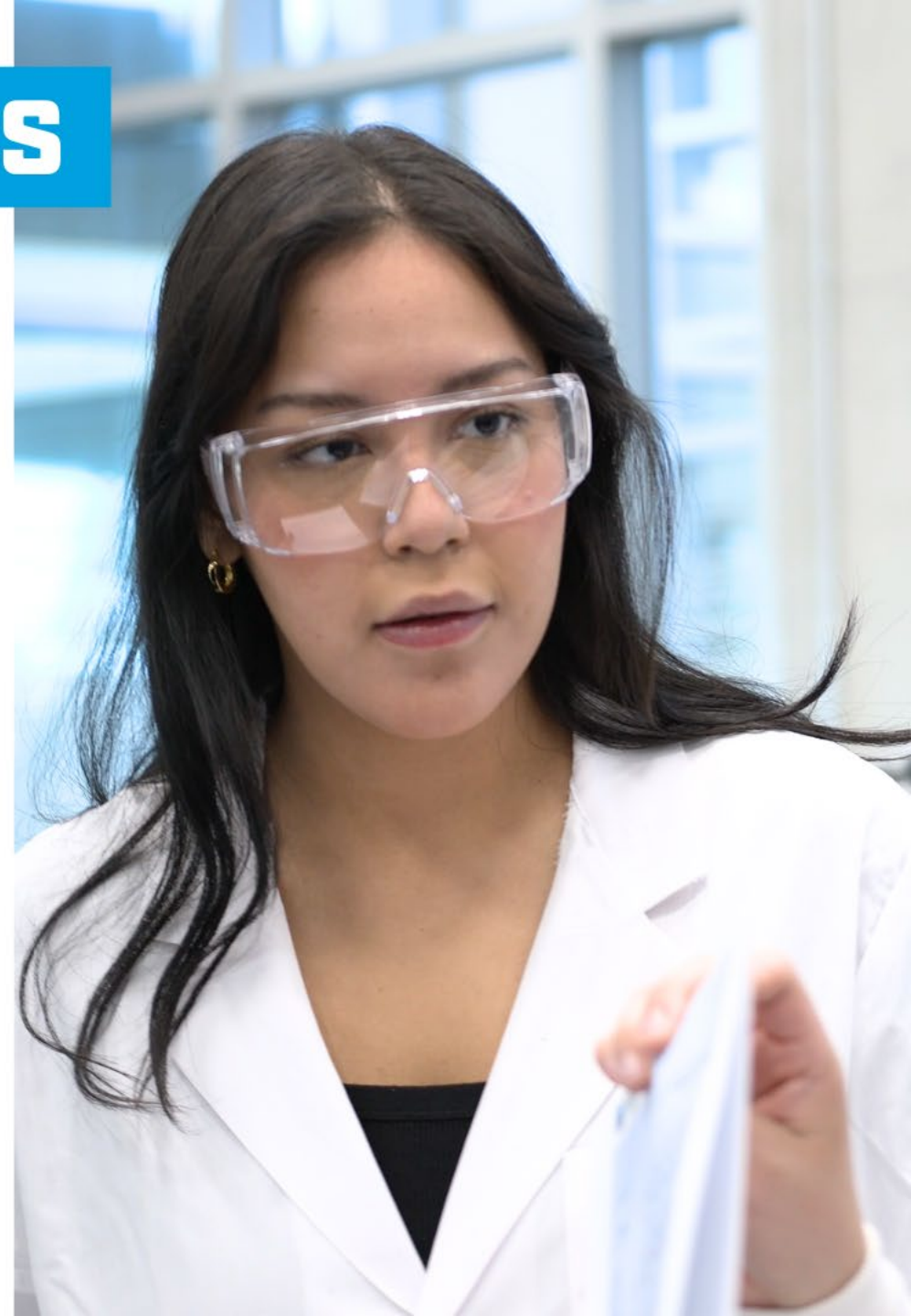
Trust is the heart of everything we do. We engage in truthful discourse with our partners and seek their input to better serve their goals and needs.

BUILDING STRONG COMMUNITIES

We offer value through collaboration and respect for long-term, sustainable growth.

SUPPORTING COMMUNITIES' DEFINITIONS OF SUCCESS

We are accountable to our partners' definitions of success and we offer support that can help them achieve their goals.



OUR GUIDING PRINCIPLES

COLLABORATING WITH AND LEARNING FROM OUR COMMUNITY PARTNERS

We seek to learn from our partners throughout our engagements so that we may mobilize traditional knowledge and create programming which better serves and celebrates each individual community and cultural heritage.

CUSTOMIZING OUR APPROACH

Our success is the result of decades of listening to and addressing our partners' needs with creative and flexible approaches to problem solving.

MAXIMIZING EMPLOYABILITY

We have many industry partnerships in place that we lever to ensure we are teaching the most in-demand skills.





WELCOME TO ERMINESKIN NATION



ERMINESKIN
CREE NATION

THE *YAHEY* DECISION, CUMULATIVE EFFECTS, AND INDIGENOUS KNOWLEDGE

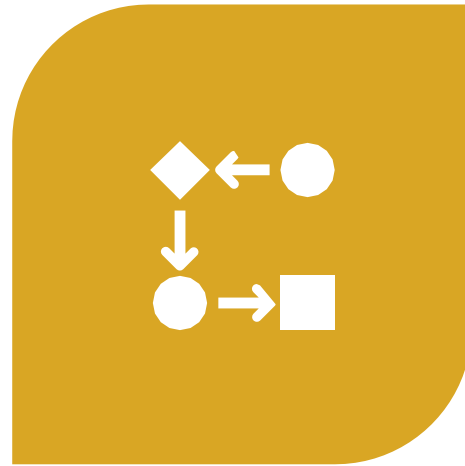
A FIRST NATION'S PERSPECTIVE FROM
TREATY 6 TERRITORY

CAROL WILDCAT, DIRECTOR
ERMINESKIN CREE NATION INDUSTRIAL
RELATIONS DEPARTMENT

PRESENTATION OUTLINE



THE **YAHEY DECISION** AND
WHAT IT MEANS TO OUR
NATION



OUR VISION OF **CUMULATIVE
EFFECTS**



WHO ARE THE **REAL
EXPERTS?**



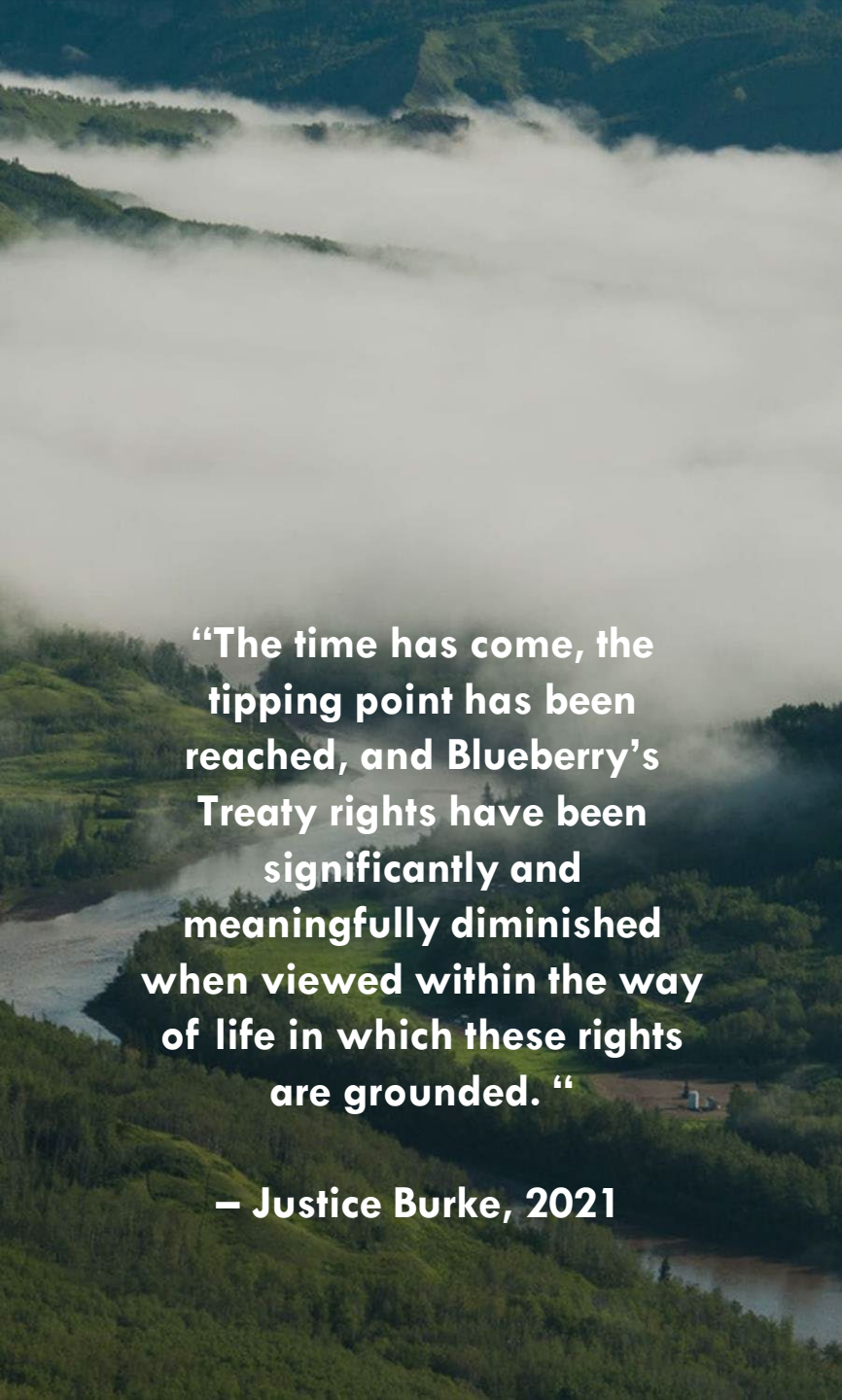
**THE YAHEY
DECISION AND
WHAT IT MEANS
TO OUR NATION**

Yahey (Blueberry) v. British Columbia 2021

In 2015, Blueberry River First Nation submitted a Notice of Civil Claim that launched the precedent-setting Yahey v. British Columbia case.

“Blueberry River First Nations brings this claim against the Crown to stop the consistent and increasingly accelerated degradation of the Nations’ traditional territory, and to protect and enforce the Nations’ constitutionally protected rights under Treaty 8 against the cumulative impacts of Crown authorized activities in their traditional territory.”

Blueberry argued that the Province, in allowing and enabling cumulative impacts and environmental degradation in Blueberry’s territory, violated the central promise of Treaty 8 which promised that there would be no forced interference with Blueberry’s way of life.



“The time has come, the tipping point has been reached, and Blueberry’s Treaty rights have been significantly and meaningfully diminished when viewed within the way of life in which these rights are grounded. “

– Justice Burke, 2021

The B.C. Supreme Court Found:

- The Province has taken up lands to such an extent that there are not sufficient and appropriate lands in Blueberry’s claim area to allow for the meaningful exercise of Blueberry’s Treaty rights.
- The cumulative effects of industrial development in Blueberry River First Nation’s traditional territory have unjustifiably infringed its Treaty rights.
- The parties must negotiate for the purpose of establishing timely, enforceable mechanisms to assess and manage cumulative impacts on Blueberry’s constitutionally protected rights.

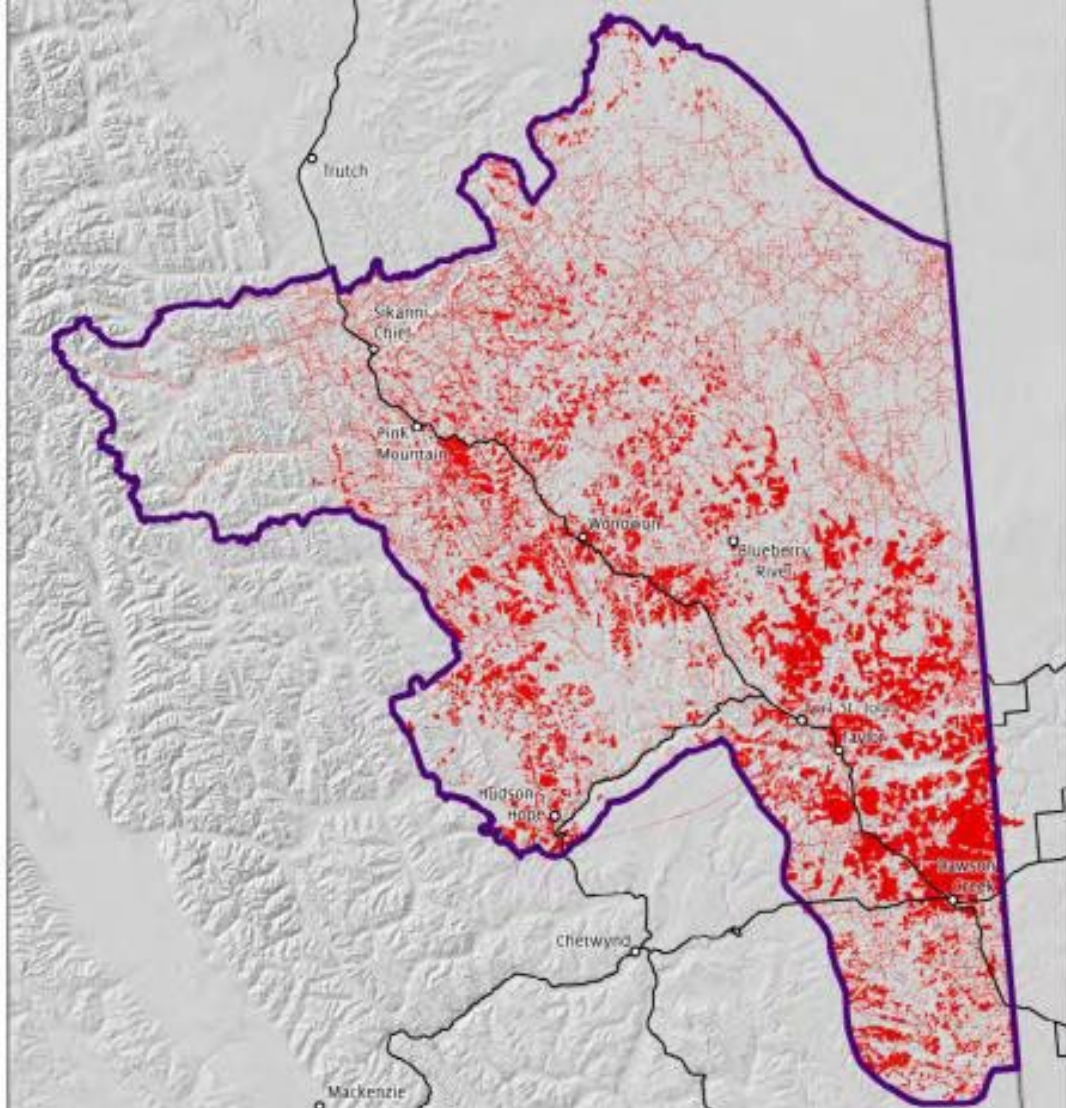
IMPLICATIONS OF THE YAHEY DECISION I

- Provinces do not have an unconstrained right to take up lands and governments may be liable for rights infringement when cumulative effects diminish Indigenous peoples' ability to exercise their rights.
- Project-specific consultation measures are not sufficient in addressing cumulative effects because they focus on site specific mitigation measures.
- A pattern of redirection in government sectors greatly contributes to cumulative effects by passing off responsibilities between departments and regulatory bodies.

IMPLICATIONS OF THE *YAHEY* DECISION 2

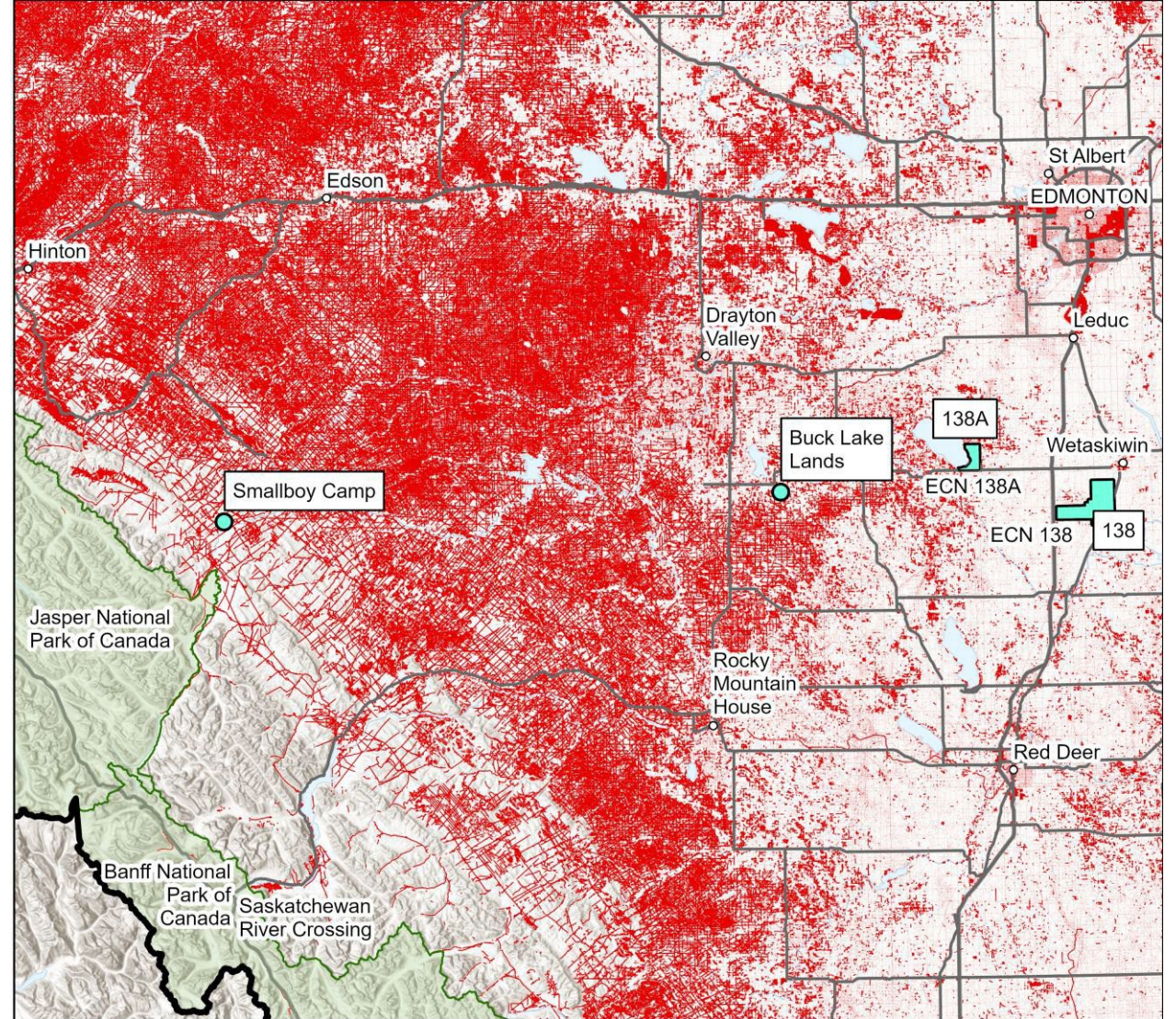
- The core Crown lands of our ancestral territories in the foothills are more disturbed than was the case in northeastern B.C.;

Blueberry River FN Landscape Disturbance

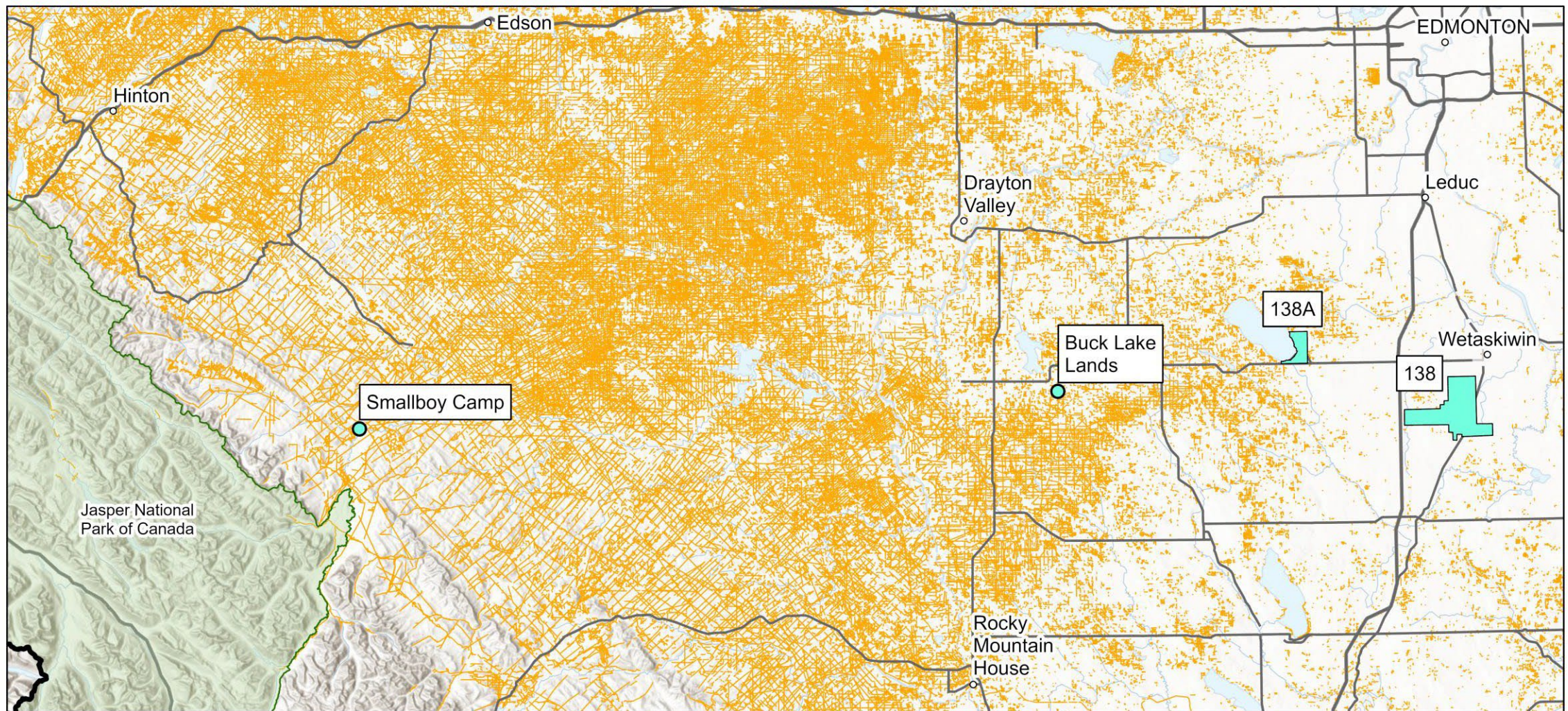


Combined footprint of roads (5m buffer), transmission lines (5m buffer), pipeline tenure, consolidated cutblocks, and agricultural areas.

Ermineskin Cree FN Landscape disturbance



Combined footprint of forestry, pipelines, seismic lines, mines, roads/rails, well sites, excavated areas, industrial sites, transmission lines, landfills, and livestock.



**ERMINESKIN
CREE NATION**

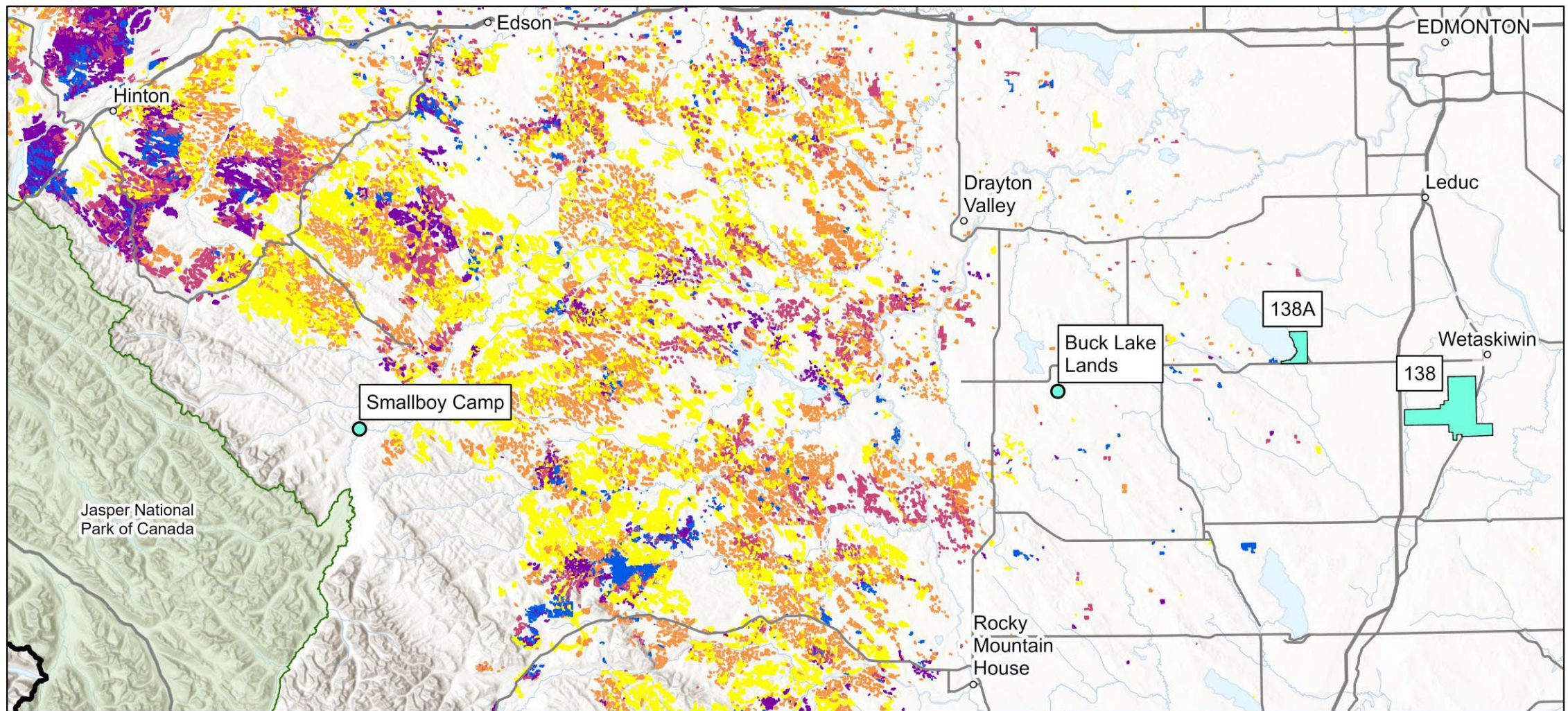
**Disturbance in ECN Traditional Territory:
Seismic Lines**

 Seismic Lines



*Projection: WGS 1984 UTM Zone 11N
Map by: Emily Boak, Willow Springs Strategic Solutions, Nov. 2021*

Data Sources: Ermineskin Cree Nation TLU database, Alberta Biodiversity Monitoring Institute Human Footprint Inventory (2018)



**ERMINESKIN
CREE NATION**

**Forestry Harvest Areas in ECN Traditional Territory
1920-2018**

YEAR

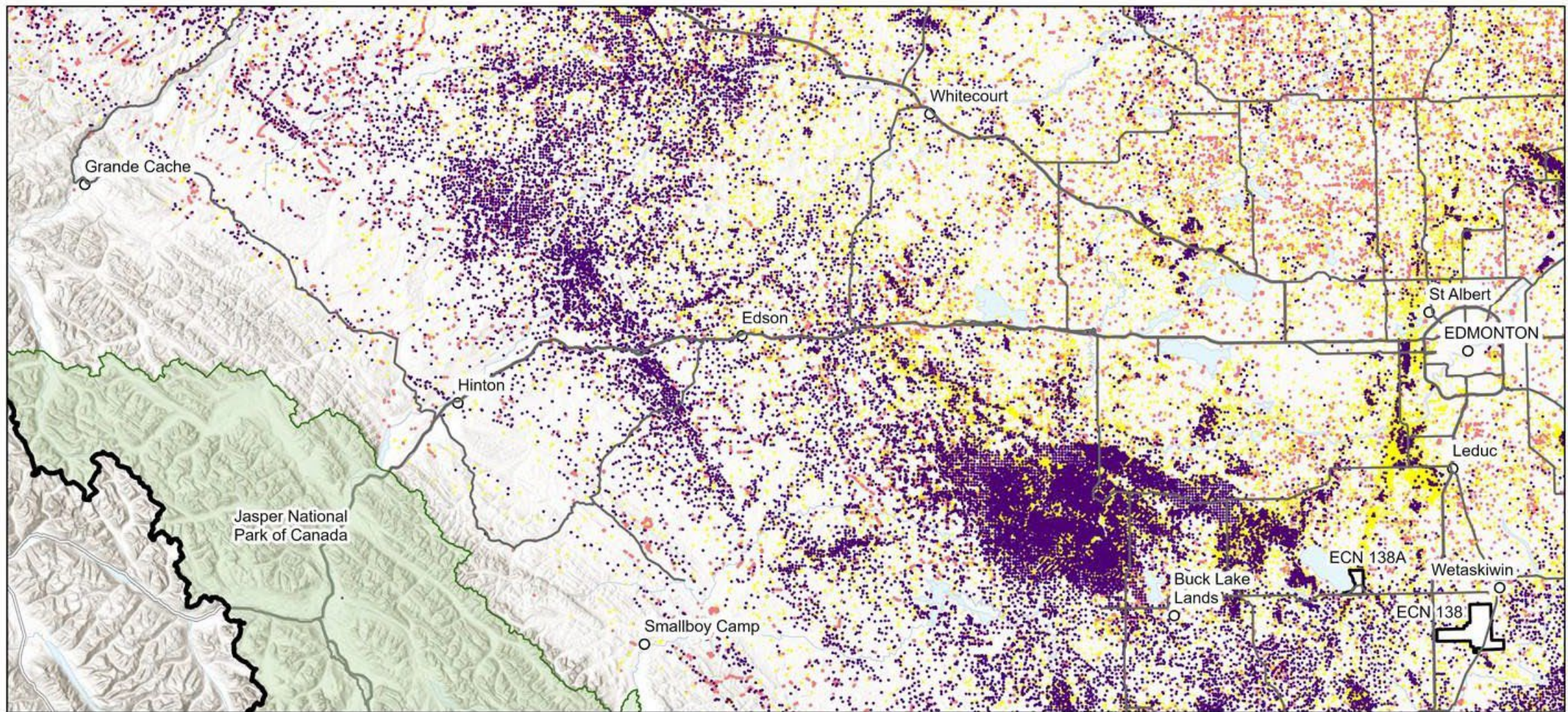
- ≤1960
- ≤1975
- ≤1990
- ≤2005
- ≤2018



0 25 50 Km

*Projection: WGS 1984 UTM Zone 11N
Map by: Emily Boak, Willow Springs Strategic Solutions, Nov. 2021*

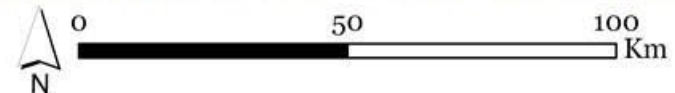
Data Sources: Ermineskin Cree Nation TLU database, Alberta Biodiversity Monitoring Institute Human Footprint Inventory (2018)



**ERMINESKIN
CREE NATION**

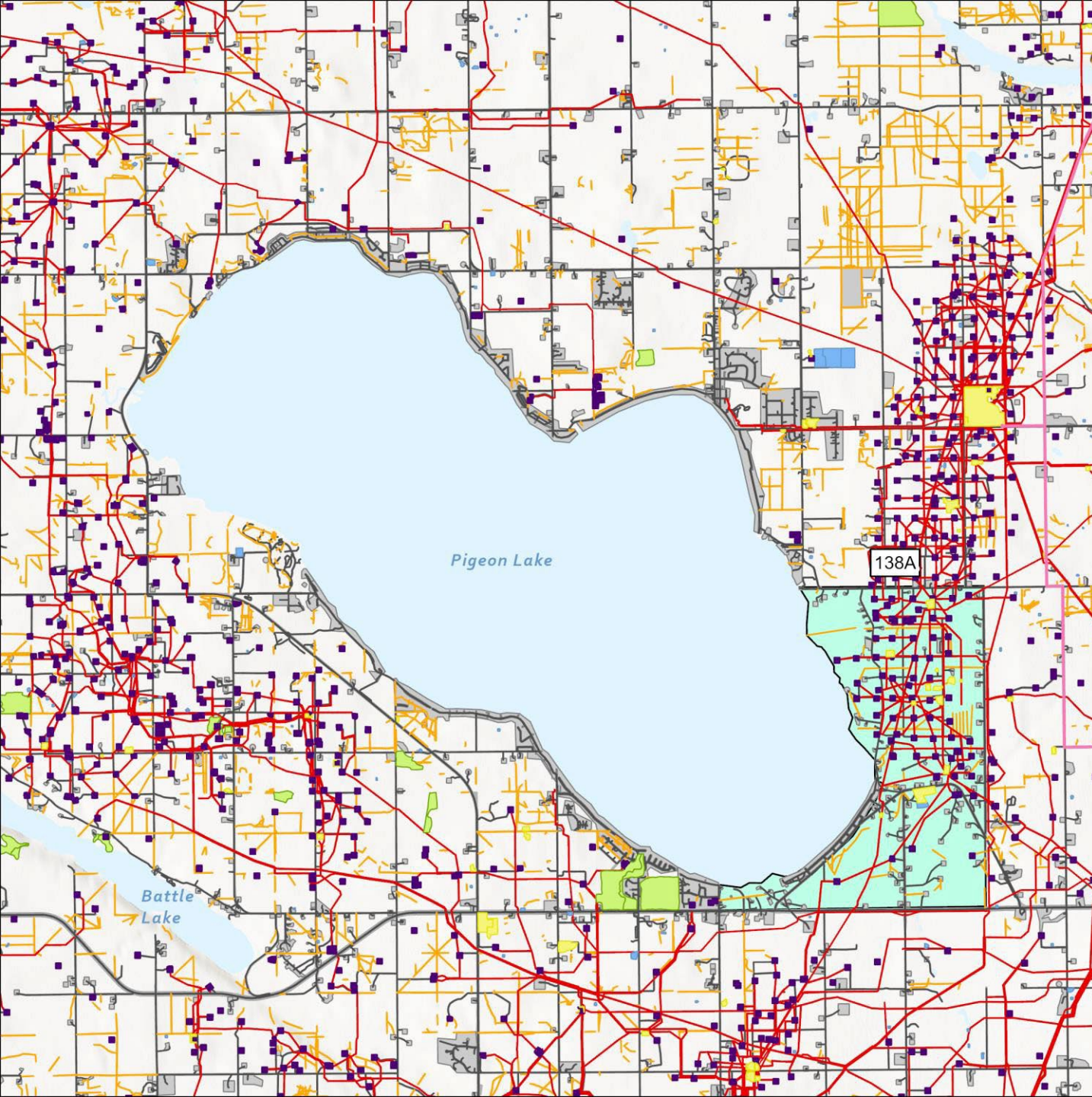
**Disturbance in ECN Traditional
Territory: Well Sites and Excavations**

- Well Sites (Active)
- Well Sites (Abandoned)
- Borrowpits, lagoons, dugouts and sumps



Projection: WGS 1984 UTM Zone 11N
Map by: Emily Boak, Willow Springs Strategic Solutions, Nov. 2021

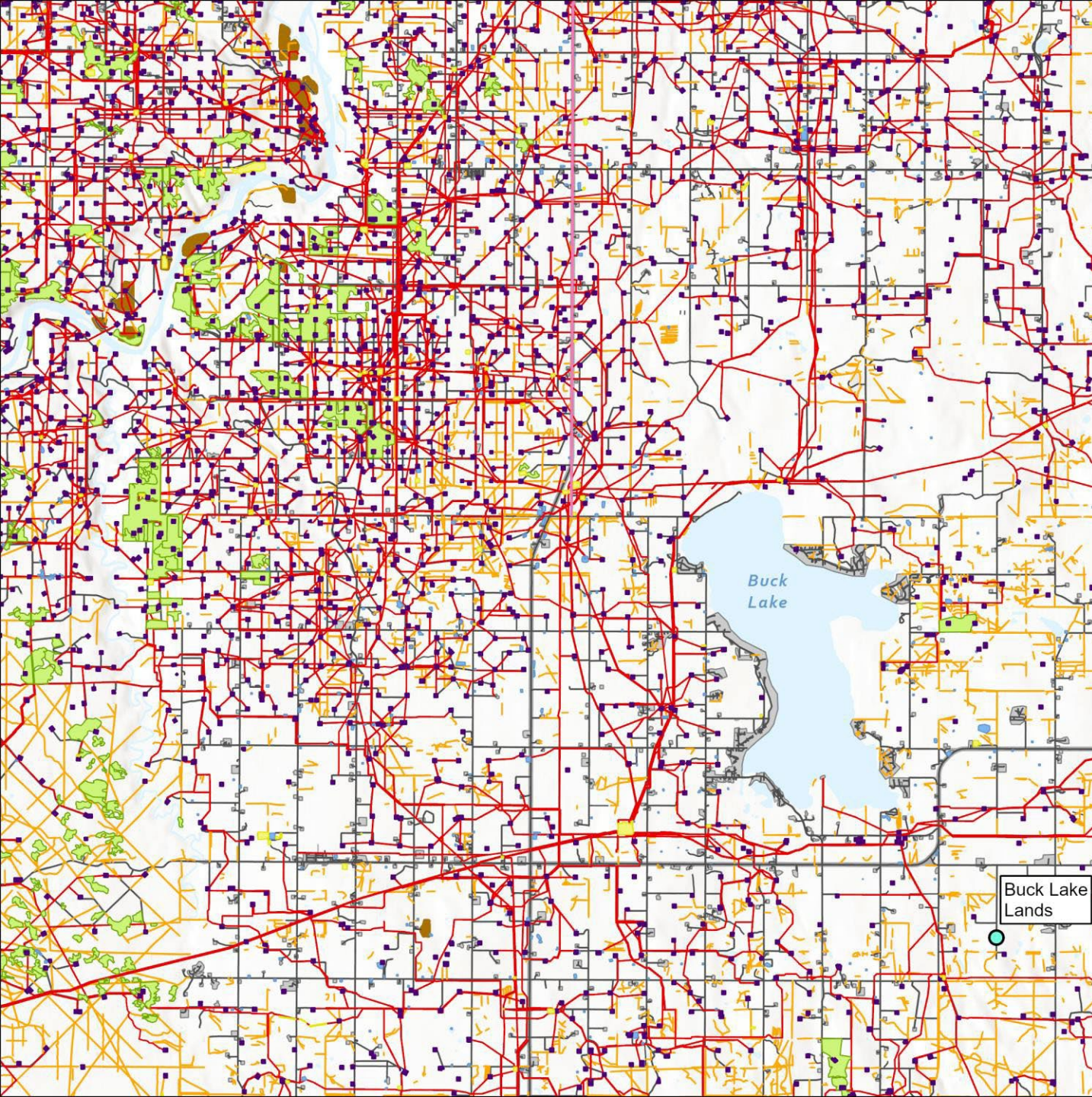
Data Sources: Ermineskin Cree Nation TLU database, Alberta Biodiversity Monitoring Institute Human Footprint Inventory (2018)



PIGEON LAKE

Landscape disturbance by type

-  Pipelines
-  Seismic Lines
-  Industrial Sites
-  Forestry Harvest Areas
-  Excavated areas
-  Well Sites
-  Transmission Lines
-  Residential Areas
-  Roads
-  Mines



BUCK LAKE

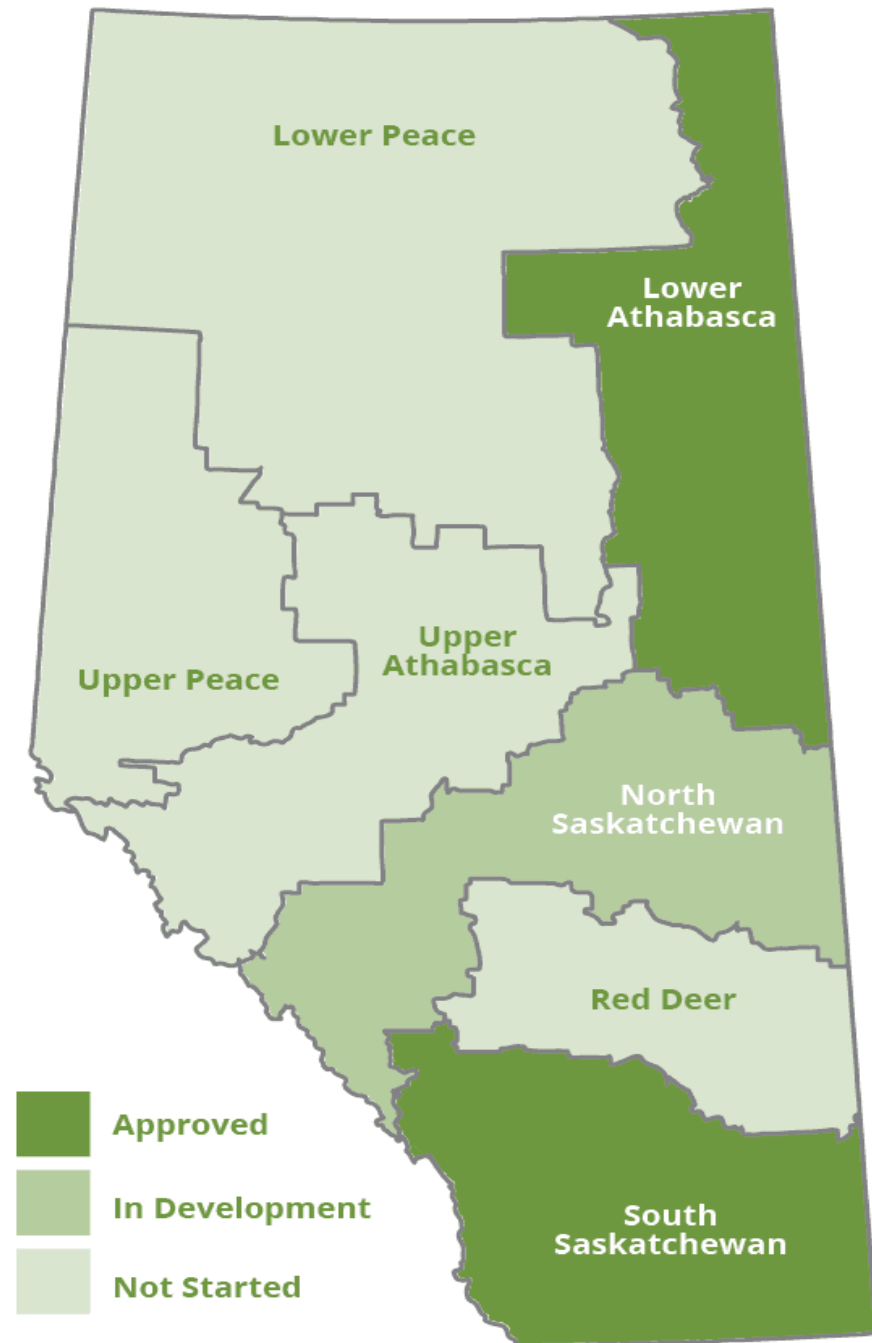
Landscape disturbance by type

-  Pipelines
-  Seismic Lines
-  Industrial Sites
-  Forestry Harvest Areas
-  Excavated areas
-  Well Sites
-  Transmission Lines
-  Residential Areas
-  Roads
-  Mines

IMPLICATIONS OF THE *YAHEY* DECISION 2

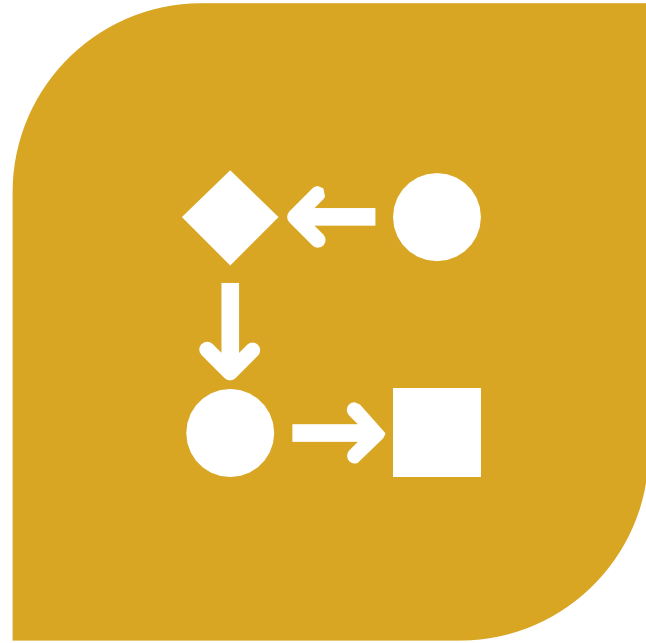
- The core Crown lands of our ancestral territories in the foothills are more disturbed than was the case in northeastern B.C.;
- Alberta currently has weaker impact assessment and cumulative effects structures in place than did British Columbia before the *Yahey* case;

- Alberta's Impact Assessment Process **does not** require an assessment of impacts to Indigenous rights, despite the *Clyde River* decision;
- In 2008, Alberta authorized the creation of regional plans to manage and monitoring cumulative effects;
- However, these regional plans are **not binding** and **only 2 plans have been approved over the past 16 years.**
- The plans, moreover, create a **patchwork and siloed approach** to cumulative effects management by focusing on individual regions and by dividing responsibilities amongst different levels of government (local, regional, provincial, etc.).



IMPLICATIONS OF THE YAHEY DECISION 2

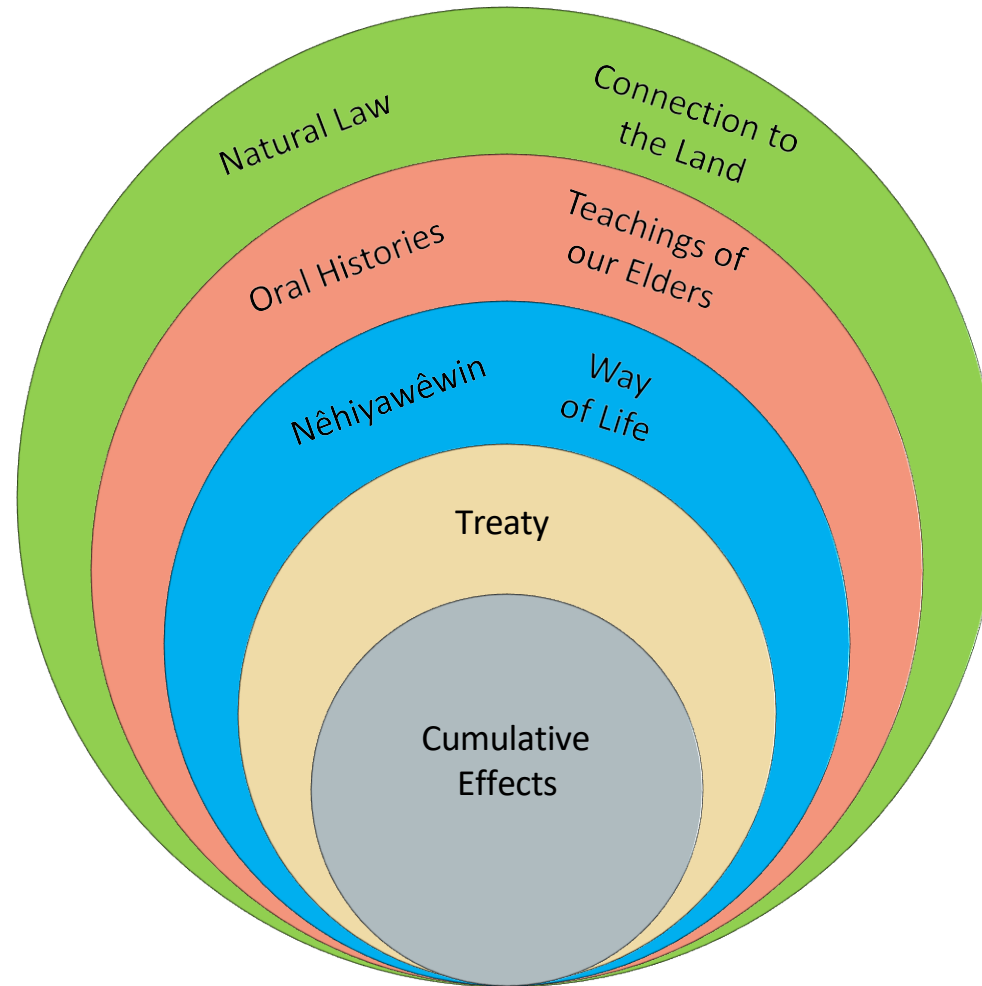
- The core Crown lands of our ancestral territories in the foothills are more disturbed than was the case in northeastern B.C.;
- Alberta currently has weaker impact assessment and cumulative effects structures in place than did British Columbia before the *Yahey* case;
- For Ermineskin Cree Nation, the *Yahey* decision is the beginning point, not the end; *Yahey is a call for Indigenous peoples to take the lead on managing cumulative effects within our ancestral territories*



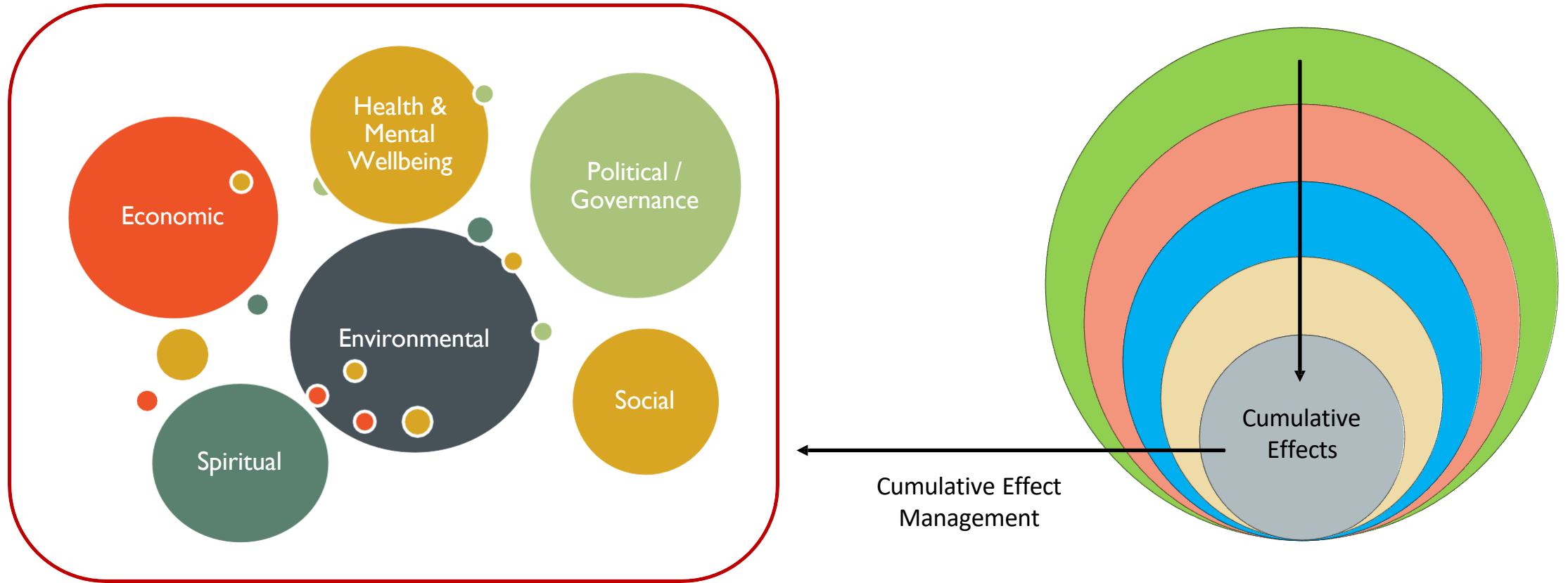
OUR VISION OF
CUMULATIVE EFFECTS

ERMINESKIN CREE NATION'S UNDERSTANDING OF CUMULATIVE EFFECTS

For our Nation,
cumulative effects are
embedded within
Natural Law, oral
histories, our language
and way of life, and the
Treaty relationship.

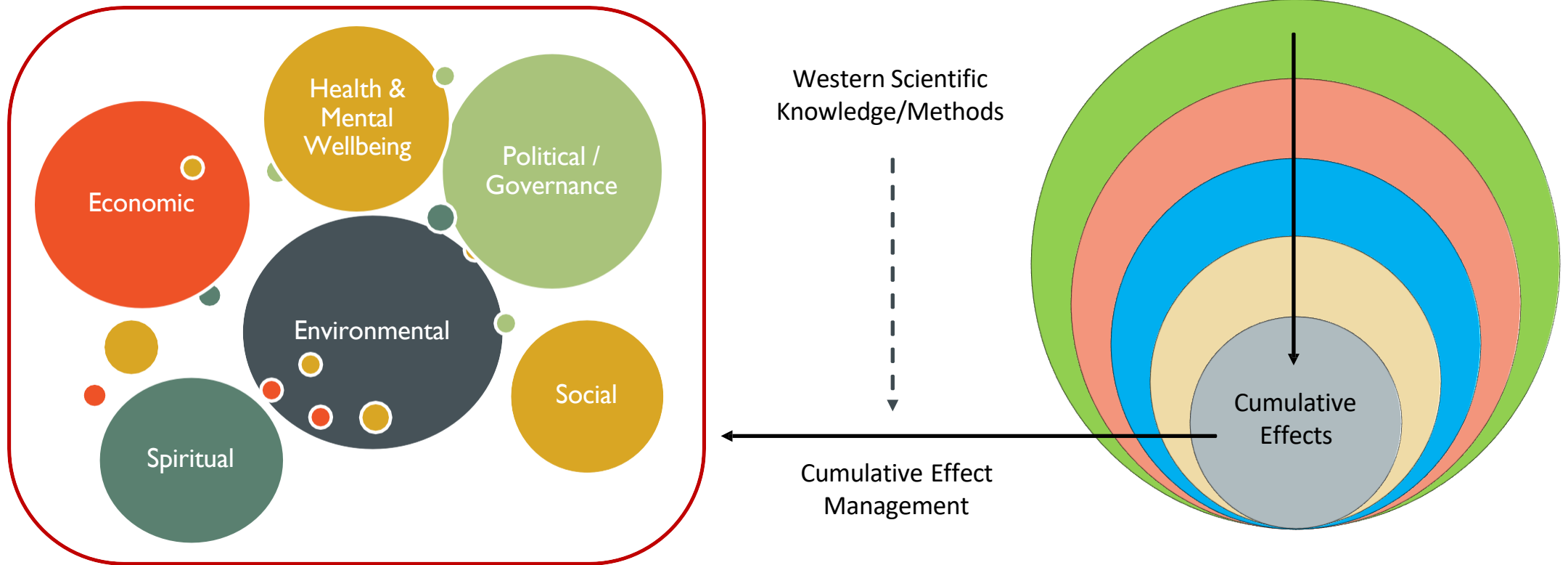


ERMINESKIN CREE NATION'S UNDERSTANDING OF CUMULATIVE EFFECTS



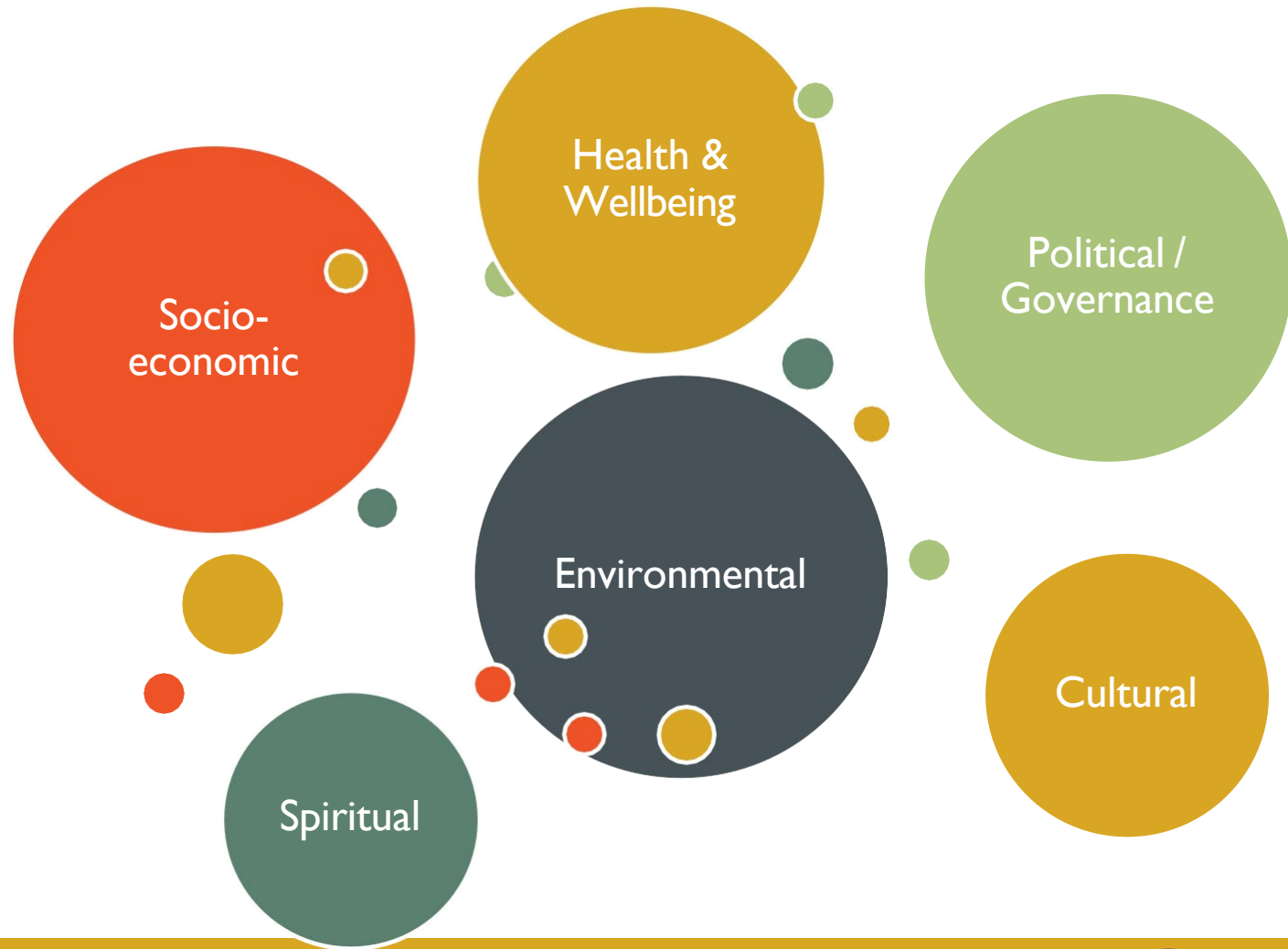
This means that how we *manage* cumulative effects is also embedded within Natural Law, oral histories, our way of life, and Treaty.

ERMINESKIN CREE NATION'S UNDERSTANDING OF CUMULATIVE EFFECTS



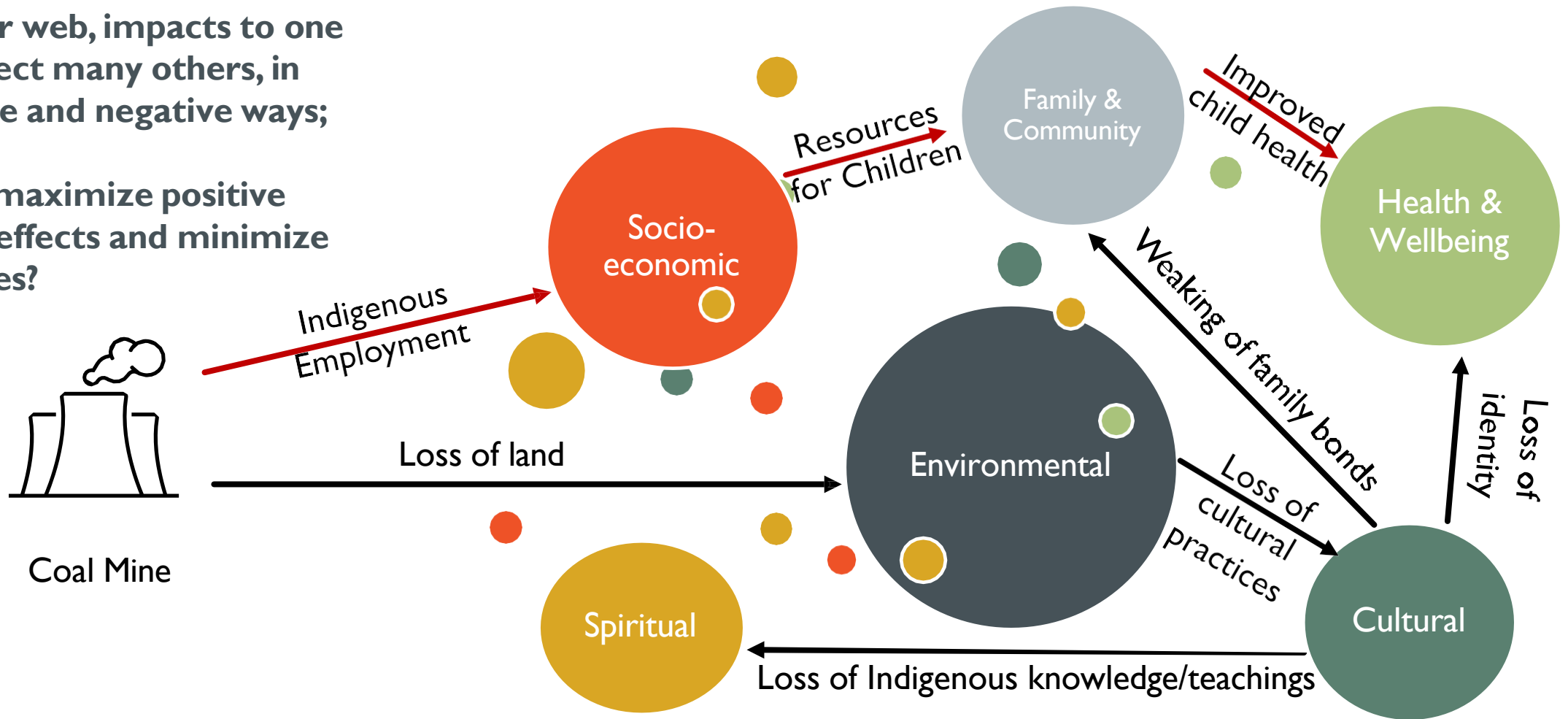
There *is* a place for Western scientific knowledge and methods, but these must be used in a way consistent with Natural Law, our knowledge and way of life, and the Treaty relationship.

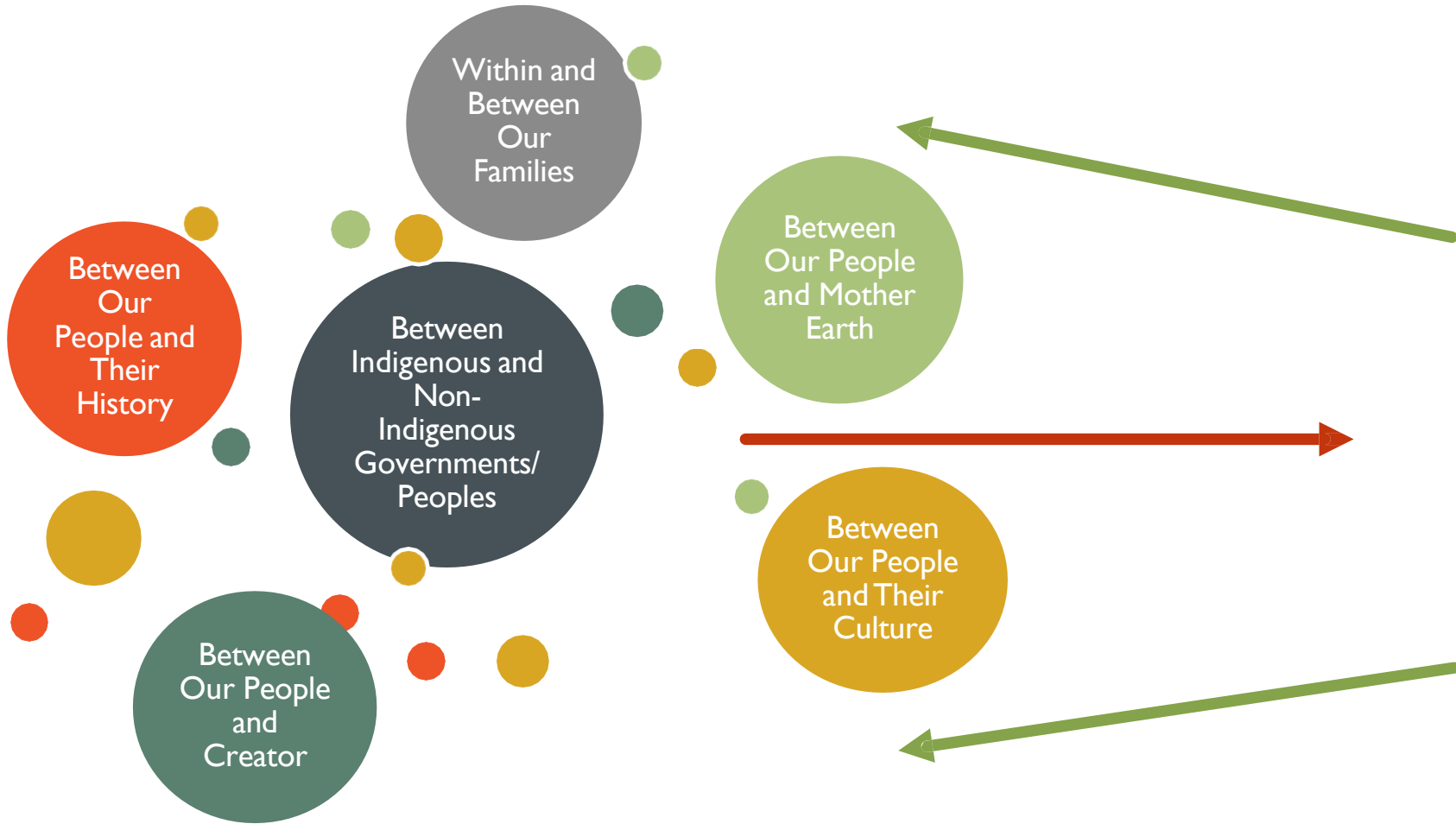
CUMULATIVE EFFECTS ARE HOLISTIC



Like a spider web, impacts to one area can affect many others, in both positive and negative ways;

How to we maximize positive cumulative effects and minimize negative ones?





**Cumulative
Effects Are the
Broken
Relationships That
Flow From
and Impact
Treaty**

WHAT CAUSES CUMULATIVE EFFECTS?

Traditional cumulative effects analysis focusses on the environmental impacts of industry; what is more often ignored, however, is the far more serious cumulative effects of government laws, policies, and programs



Industry and Development



Oil and Gas

Forestry

Agriculture

Mining

Fishing

Livestock

Hydropower

Roads & Utilities

Tourism & Rec



Government Policies



Consultation
policies


Child Welfare
Systems

Underfunded
Programs

Justice Systems

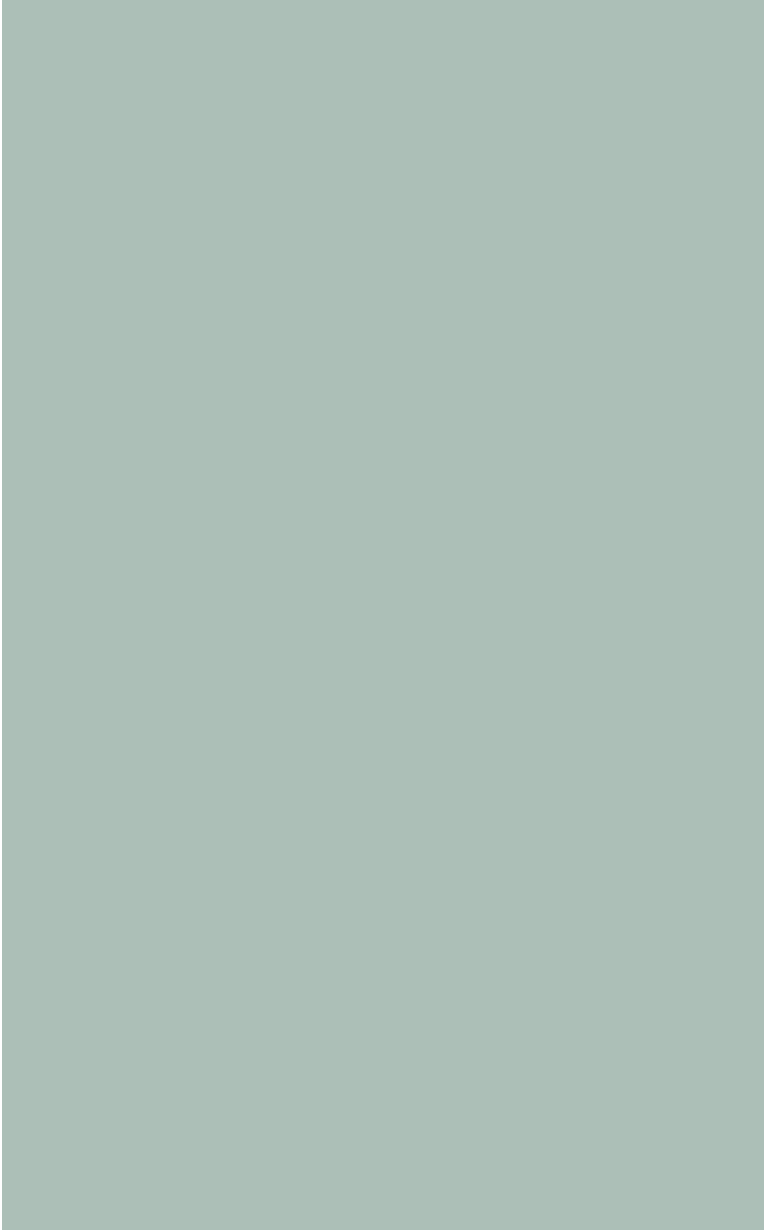
Natural Resources
Transfer Act

Public Land Use
Zones



**HERE'S THE SECRET:
COLONIAL GOVERNMENTS
DON'T TRACK CUMULATIVE
EFFECTS BECAUSE THEY
DON'T WANT TO KNOW;**

**THIS CREATES A STRATEGIC
OPPORTUNITY FOR
INDIGENOUS PEOPLES TO
GATHER INFORMATION
AND TAKE THE LEAD;**



HOW DO WE MOVE FROM **REACTIVE** TO **PROACTIVE**?



CUMULATIVE EFFECTS

Impacts to our Nation and ancestral territories from past, present, and future government policies, colonial settlement, and industrial development



CUMULATIVE EFFECTS **ASSESSMENT**

Understanding **sources** of impacts, priority values for the Nation, and current and projected states of these values

CUMULATIVE EFFECTS **MANAGEMENT**

Creating a system to link cumulative effects and priority values to guide **decision making** and consultation with government, regulators, and industry.



WHAT OUR NATION IS DOING

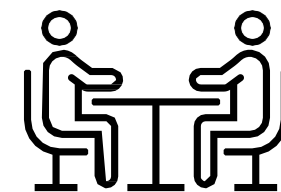
1

ORAL HISTORY
INTERVIEWS

WHAT OUR NATION IS DOING

100 Oral History Interviews with Elders and Knowledge Keepers

- These oral histories will reflect our understanding of Treaty and ensure our management of cumulative effects is anchored in Natural Law, the teachings of our Elders, and our way of life
- Research will track the loss of Indigenous knowledge and practices of the Nation across generations demonstrate the cumulative effects to our people



WHAT OUR NATION IS DOING

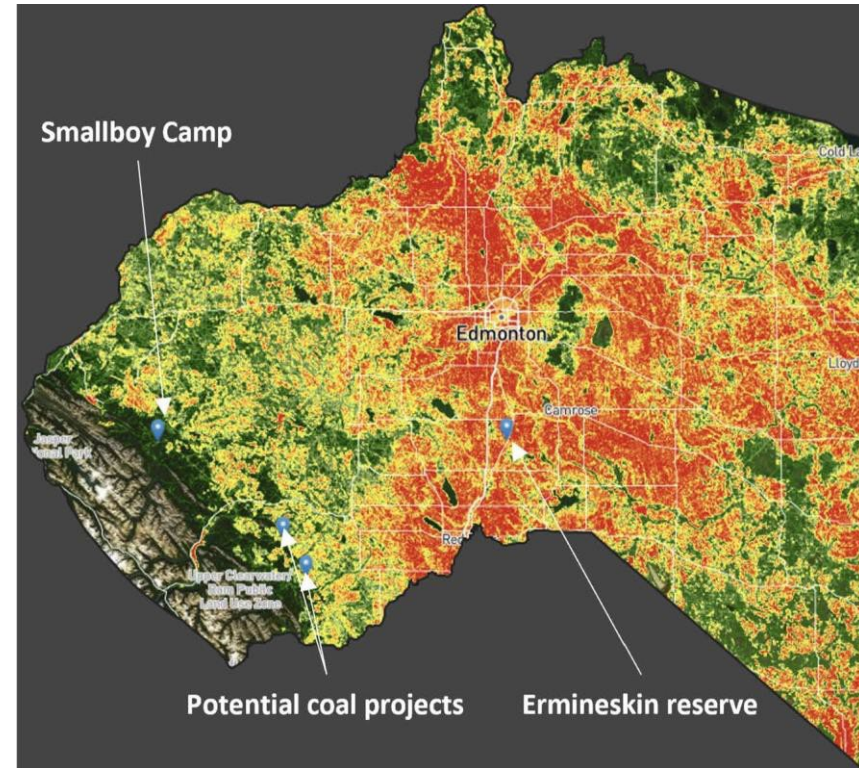


TERRESTRIAL DISTURBANCE AND LAND USE DATABASE

WHAT OUR NATION IS DOING

Terrestrial Disturbance and Land Use Database allows our Nation to track terrestrial disturbance and more effectively understand impacts to our rights, way of life, and culture;

This tool will allow us to negotiate more effectively with governments, regulators, and industry in relation to the cumulative effects of government policies and industrial projects



WHAT OUR NATION IS DOING

3

ERMINESKIN CREE NATION CENSUS

INFORMATION GATHERING TOOLS

ERMINESKIN CREE NATION CENSUS

DEMOGRAPHICS

EDUCATION

EMPLOYMENT AND INCOME

HOUSING

FOOD AND FOOD SECURITY

HARVESTING

LANGUAGE AND CULTURE

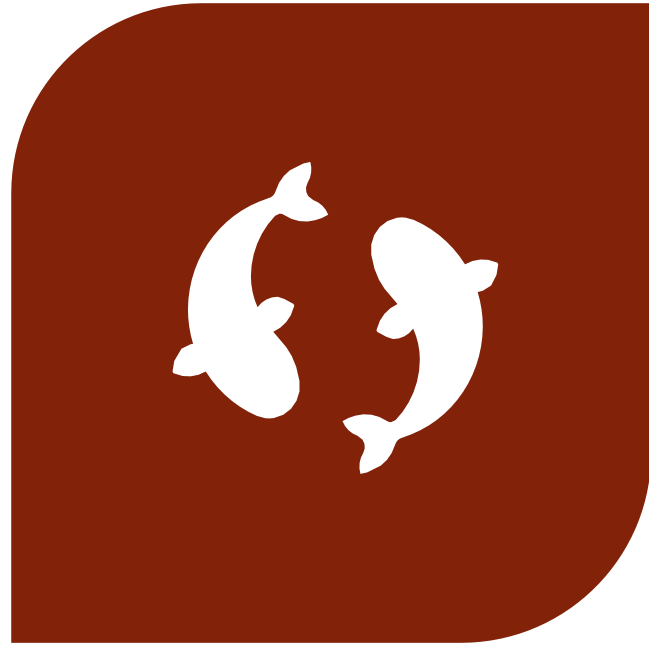
HEALTH AND WELLBEING

FAMILY AND COMMUNITY RELATIONS

SAFETY

The Census is key to data sovereignty, self-government, and self-determination:
we are collecting information about us, for us.

The Census will provide us with the information we need to enforce Treaty, assert our rights, and manage cumulative effects.



WHO ARE THE **REAL**
EXPERTS?

CUMULATIVE EFFECTS ARE THE REAL HISTORY OF CANADA

- Indigenous peoples have been experiencing 'cumulative effects' since the arrival of Europeans and the formation of Canada, from the broken promises of Treaty and residential schools to chronic underfunding and the taking up of our ancestral territories
- *The history of Indigenous peoples is the history of cumulative effects; Indigenous knowledge is the knowledge of cumulative effects*



IT'S TIME FOR THE PEOPLE AND INSTITUTIONS THAT CAUSED CUMULATIVE EFFECTS TO STEP ASIDE AND LET THE REAL EXPERTS TAKE THE LEAD

If we are serious about managing cumulative effects and reversing centuries of negative impacts to Mother Earth and Indigenous peoples, then cumulative effects management needs to be based in the worldview, values, and knowledge of the only people who have ever cared for and stewarded these lands in a sustainable way: First Nations



**CAPACITY BUILDING WITH
ERMINESKIN CREE NATION**

IMPACT ALONGSIDE ERMINESKIN

Real impact starts with real research.

- We have helped build capacity through applied research in Environmental Monitoring led by Ermineskin's goals and needs
- One example of capacity building through applied research is our Athabasca River study alongside Ermineskin Nation



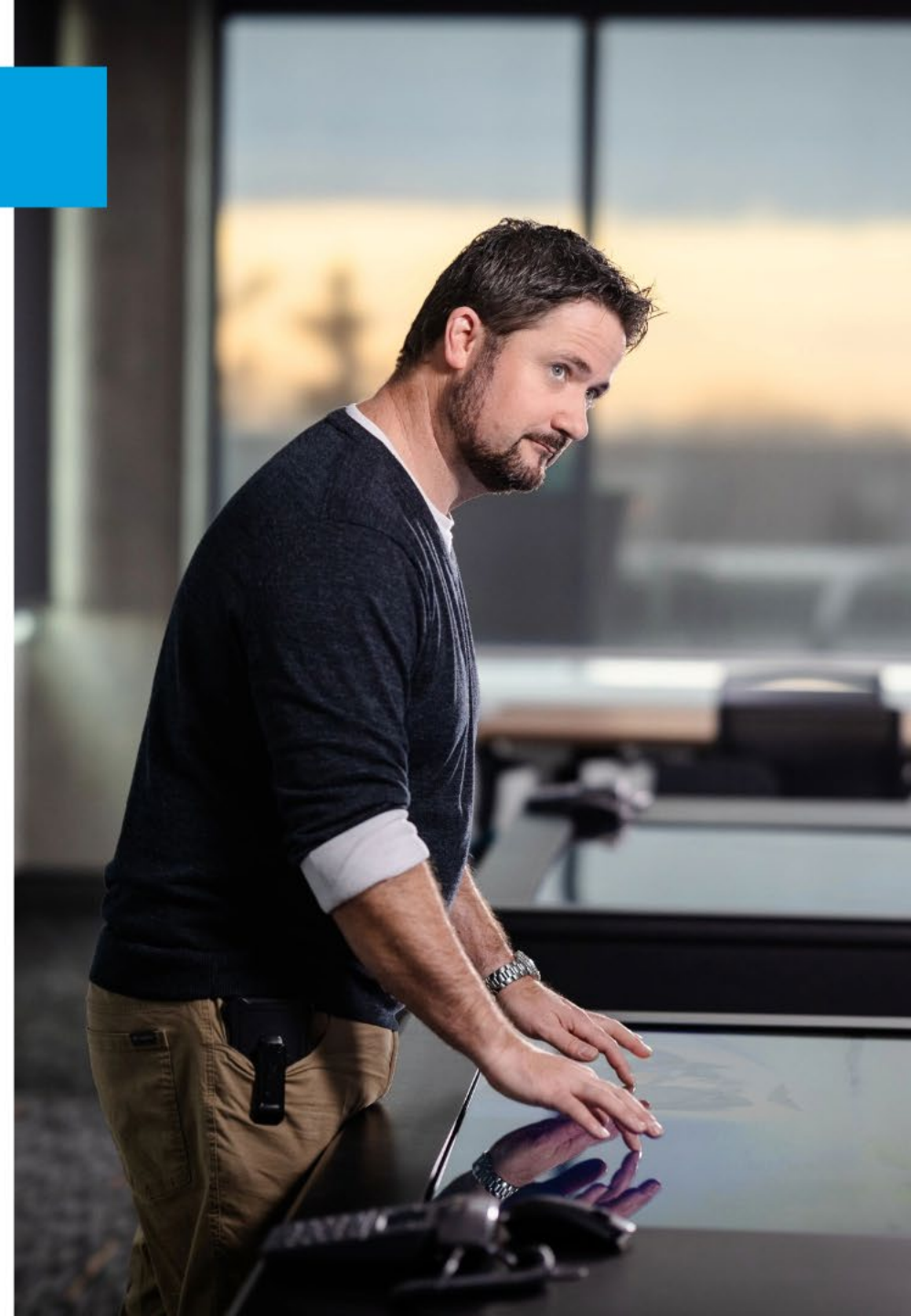
A group of three people, two women and one man, are gathered around a large, dark, reflective digital display table. They are looking at the screen, which shows a blue and green abstract graphic with a white line graph. The man on the right is leaning over the table, pointing at the screen. The woman on the left is also leaning over the table, looking at the screen. The woman in the middle is standing behind the table, looking at the screen. The background is a bright blue wall with a large screen displaying the same abstract graphic. The overall atmosphere is professional and collaborative.

THE NORTHERN LANDSCAPES SENSITIVITY ATLAS

IMPACT FOR THE NORTH

The Northern Landscapes Sensitivity Atlas (NLSA) is a project to understand and map the importance of the northern landscapes to the Indigenous communities that call them home.

- By combining socio-cultural information into our data sets, we can answer the questions that matter most to our partners, allowing them to lead the way in their data acquisition and truth-seeking endeavours.
- The NLSA project allows for the cultural landscapes to become a part of the calculation for questions relating to economic development on Indigenous lands.
- Alongside our partners, we leverage the built world, the natural world, and the social world to create a usable point of truth for our partners.



**DO YOU HAVE QUESTIONS?
ASK US ABOUT OUR IMPACT**

